

Load carrier 495/496

For VW Transporter (T4) 91-

495/1071-140-680-01

496/1071-140-618-01

5 års garanti
years warranty
Jahre Garantie
ans de garantie

Components:

496: Complete load carrier comprising 2 bars, 4 feet and fittings.

495: 1 bar, 2 feet and fittings (for use where a third bar is required).

Materials:

Brackets in galvanized, Pebax coated steel plate.

Foot pads in Dryflex, plastic material similar to rubber.

Feet in galvanized, powder coated steel plate.

Bars in galvanized, black polyethylene coated steel tube. Wall thickness = 2,0 mm.

L = 1400 mm.

External dimensions: THULE standard 32 x 22 mm.

Function:

Simple to fit. Recommended minimum distance between bars: 700 mm. High stability guaranteed by the fact that the feet are bolted to the bars.

496


Max load width 121 cm



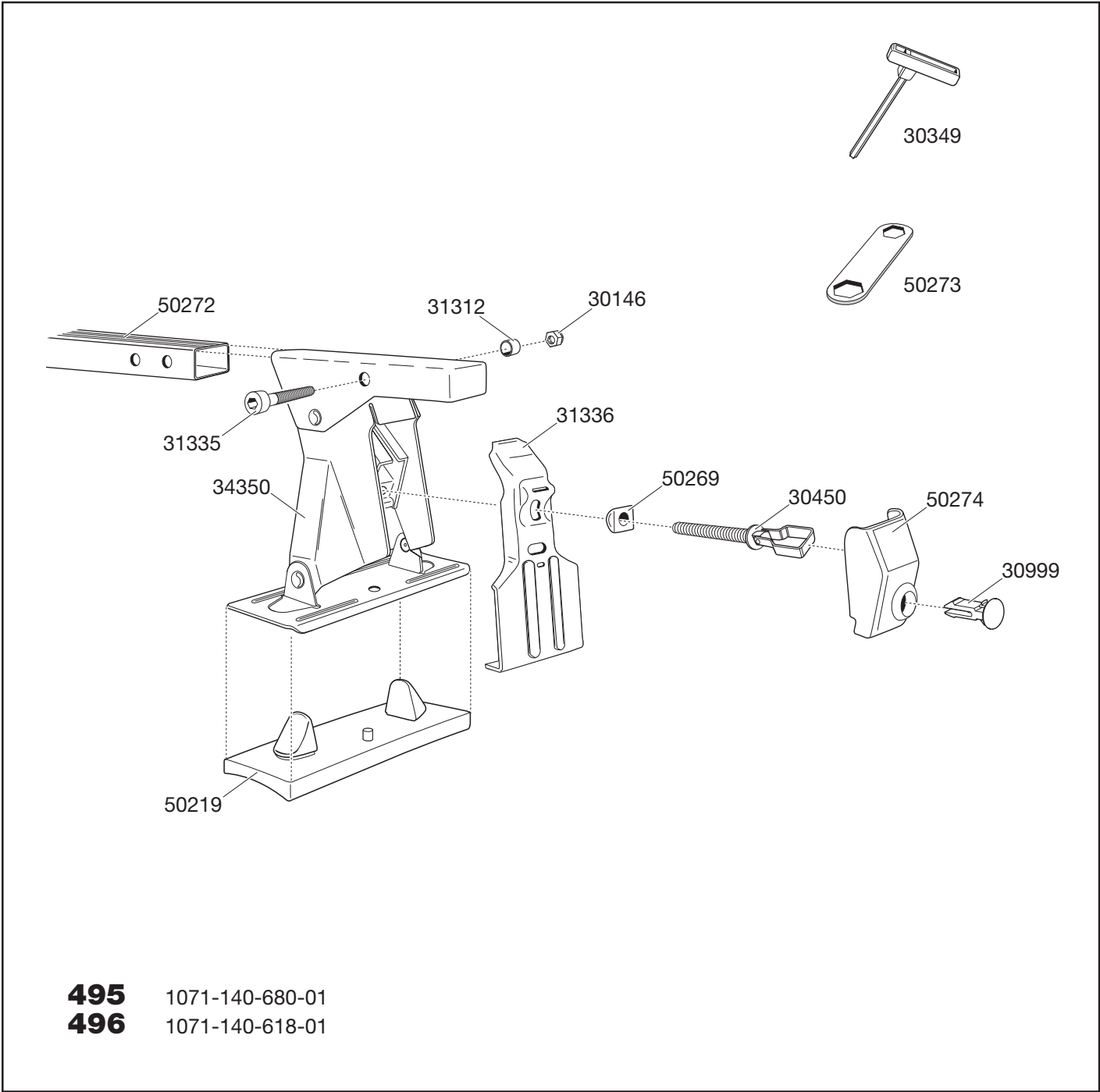
495

Max load width 121 cm



- Complete, ready-packaged load carrier.
- Pebax coating and Dryflex material guarantee optimum protection against scratches and other damage to the paintwork.
- Bars locked against the feet with the help of tensioners and bolts.
- Maximum roof load: 100 kg.
- Patented THULE design.
- Bolts are easy to tighten up using the grooved lock caps as tools.
- Can be locked with:
 - 544 4 lock cylinders
 - 596 6 lock cylinders
 - 588 8 lock cylinders
 - With 596/588, 2/4 lock cylinders remain available for locking other accessories.
- Featuring THULE's One Key System. 

Load carrier 495/496 **For VW Transporter (T4) 91-**



Individual packs

Pallet

Product	EAN	Kg	L/W/H in cm
495	7313020004952	5,0	148/16/10
496	7313020004969	8,7	148/16/10

Product	Qty/kg	L/W/H in cm
495	50/262	152/80/115
496	50/446	152/80/115