

Automotive Aftermarket

Power Transmission Group

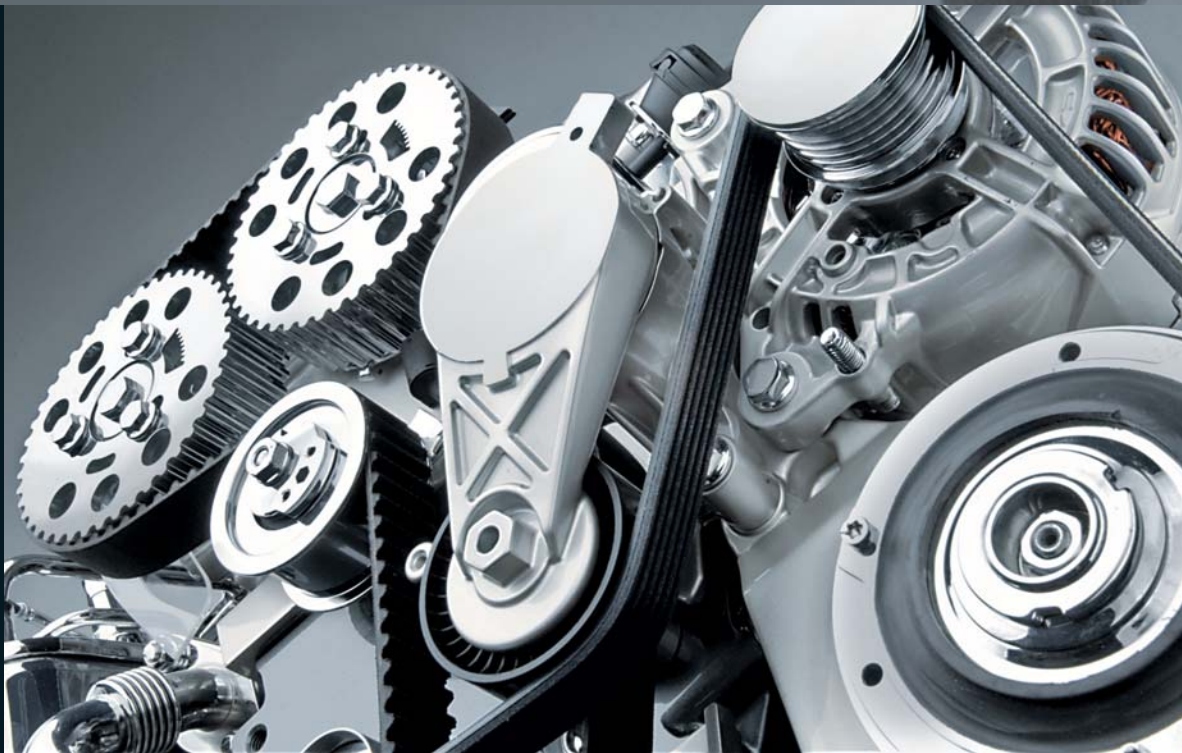
Original quality – the best replacement, worldwide.

ContiTech Power Transmission Group develops and manufactures everything from power transmission belts right up to complete belt drive systems. Our leading position in the automotive original equipment market is the platform for our automotive aftermarket operations which are accompanied by a first-class service for our customers. We deliver a complete product range of drive components for cars, trucks and buses – in OEM quality.

We can look back on more than 75 years' experience in the automotive aftermarket. We are now the no. 1 in this sector in Germany, while in Europe and globally we are among the top three suppliers. We supply our customers not only with power transmission belts but also with complete kits, and for a good reason: in the automotive OEM sector we are heavily involved in the development of entire belt drive systems. By using this know-how we are able to offer drive components which are perfectly matched to

each other. The Power Transmission Group is part of ContiTech AG, one of six divisions making up Continental AG. This corporate affiliation gives us additional strength and reliability because we have the opportunity to make use of potential synergies, for example in terms of materials technology. Our worldwide distribution organisations and our international organisational structure enable us to deliver wherever demand exists.

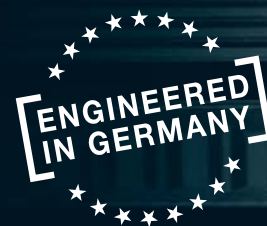


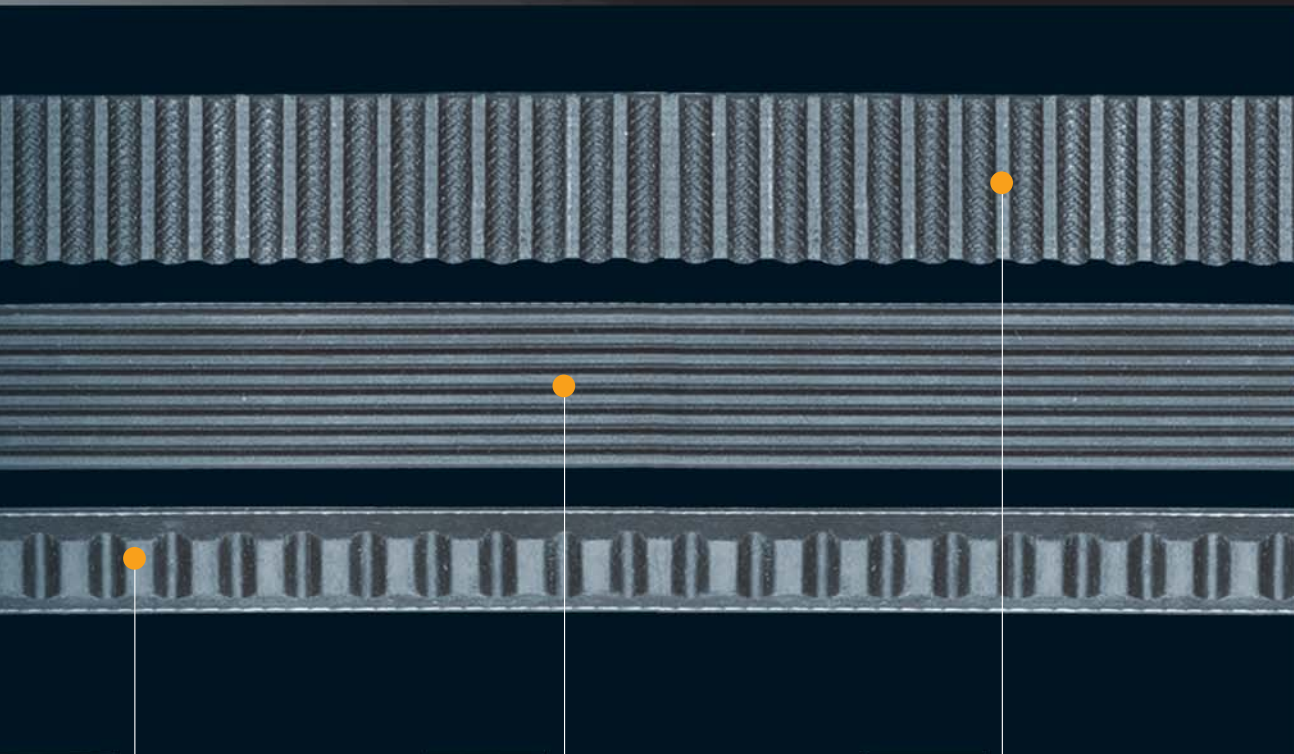


For every eventuality.

Power transmission belts and kits for cars and commercial vehicles.

Engineered in Germany – manufactured worldwide. As a one-stop supplier of power transmission belts and drive components for the automotive aftermarket, we supply products and systems for over 95% of all vehicles worldwide. We have a constantly updated product portfolio available and can provide new products in original quality within a short time of OE uptake in the automotive aftermarket. Incidentally, in the automotive OEM market our products contribute significantly to the functionality of safe, convenient and environment-friendly drive solutions. In our developments we set benchmarks from which the automotive aftermarket also profits.





V-belts

For driving generators, fans, water pumps, A/C compressors and power steering systems



CONTI® SF
Heavy-duty V-belts for cars, trucks, buses and tractors

- ✘ Raw-edge
- ✘ Maintenance-free
- ✘ Service-free (no retensioning required)
- ✘ Suitable for operation in sets
- ✘ Very long service life
- ✘ Oil-resistant
- ✘ Heat- and cold-resistant
- ✘ Tropicalised



CONTI® MULTIBELT
Composite V-belts for commercial vehicles

- ✘ Raw-edge or wrapped
- ✘ Unaffected by vibrations and impact loads
- ✘ No twisting in the V-belt pulleys
- ✘ Reliable torque properties
- ✘ High tear loads
- ✘ High load capacity
- ✘ Low-maintenance

Multiple V-ribbed belts

For driving generators, fans, water pumps, A/C compressors and power steering systems



CONTI-V MULTIRIB®
Multiple V-ribbed belts for cars, trucks and buses

- ✘ Maintenance-free
- ✘ Extremely long service life
- ✘ Heat- and cold-resistant
- ✘ Oil-resistant

CONTI-V MULTIRIB® ELAST
Multiple V-ribbed belts for cars

- ✘ Extremely long service life
- ✘ Heat- and cold-resistant
- ✘ Oil-resistant

Timing belts

For camshaft drives



CONTI SYNCHROBELT®
HTD timing belts for cars



CONTI SYNCHROBELT®
STD timing belts for cars



CONTI SYNCHROBELT®
Trapezoidal timing belts for cars

- ✘ Heat- and cold-resistant
- ✘ Unaffected by tropical climates
- ✘ Oil-resistant



Belt kits

For the automotive aftermarket we offer complete kits containing drive components which are optimally matched to each other. The benefits are obvious for garages: there is no need to order individual

parts, cross-referencing of vehicle and type is always guaranteed, and any complaints can be handled via a central contact. This saves time and reduces process costs.

CONTI-V MULTIRIB® KIT
Multiple V-ribbed belts for commercial vehicles



CONTI-V MULTIRIB® KIT
Multiple V-ribbed belts with decoupled torsional vibration damper isolator TVDi with all the necessary screws and seals



CONTI-V MULTIRIB® ELAST TOOL KIT
Elastic multiple V-ribbed belt with installation tool and instructions



CONTI-V MULTIRIB® KIT
Multiple V-ribbed belt with take-up pulley



CONTI SYNCHROBELT® KIT
Timing belt for the camshaft drive with take-up and deflection pulleys and accessories



CONTI SYNCHROBELT® KIT
Timing belt with water pump and seal plus take-up and deflection pulleys





Your wish is our command.

Our products and systems are available worldwide.

The demand for drive components is growing worldwide. Our global presence means we are able to supply our international customers reliably and quickly. We operate in close proximity to the market and respond flexibly to the respective consumer markets. The incorporation of the production sites of Danish company ContiTech Roulunds Rubber AS has enabled us to expand our international production base, so we now manufacture on a total of 9 sites in 8 countries.

We are investing in the future by specifically developing new markets and constantly updating and expanding our product range. This will ensure that we remain a reliable partner to the automotive aftermarket in the long term too.

For your success.

Active support via a complete service range.

We offer expert customer service and consultancy services to retailers and garages: from a service hotline to high-quality training courses and to sales aids for the point-of-sale. Our complaint management staff, for example, deal with technical queries in the shortest possible time. We provide various measuring instruments and special tools to support the professional use of our power transmission belts and kits, which ensure inexpensive and proper installation. The CONTI® BTT Hz Belt Tension Tester, for example, is especially useful for testing the tension of multiple V-ribbed belts and timing belts. It is user-friendly and precise and operates in accordance with the latest

method: frequency measurement in hertz. Unlike other measuring instruments of this type, the BTT Hz can measure all belts, including OE or competition products. Then there is the award-winning CONTI® TOOL BOX which contains a complete tool set especially for professionally changing timing belts. Tension gauges for V-belts and multiple V-ribbed belts and a length gauge round off our range of special tools and measuring instruments.

Electronic tension gauge

For measuring the tension in timing and multiple V-ribbed belts



Mechanical tension gauges

For setting the tension in V-belts and multiple V-ribbed belts



V-belt KRIKIT 1



Multiple V-ribbed belt KRIKIT 2 and KRIKIT 3

Length gauge

For V-belts and multiple V-ribbed belts





CONTI® TOOL BOX

The award-winning CONTI® TOOL BOX is a special tool for timing drives and ancillary component drives e.g.

- for locking components
- for locating bearing noises
- for monitoring alignment
- including parts list and operating instructions



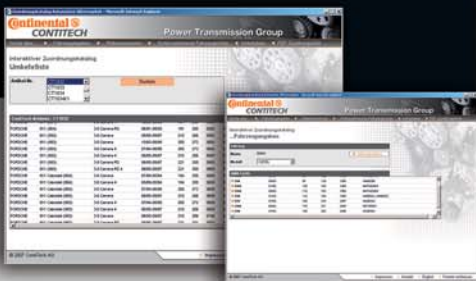
Display stands and wall-hung racks

Our sales aid system helps with product presentation, provides product information and creates an ordered POS.





Internet services



The cross-reference list, which is updated four times a year, enables the right power transmission belt for a particular car to be identified quickly and easily on the internet. Our “Technical News” newsletter provides updates on changes in the range or new products in the range, among other things. Our “Technical Info” publication reports installation tips and tricks on a monthly basis. Other services which can be accessed online:

- Online catalogues
- Installation instructions
- Frequently asked questions (FAQs)

Technical literature

Technical literature supports our customers in their practical operations, e.g. the “Practical Tips” brochure or the latest leaflets with comprehensive information on our power transmission belts, kits and tools. As a counterpart to our interactive catalogue, the cross-reference lists are also available as hard copies and in PDF format.





Technical hotline
+49 (0)511 938-5178
Mon - Fri, 8am - 6pm

Expert advice – customised and personal.

Training courses

We enjoy great success with our technical and commercial training courses which we run around the world on our customers' premises. The courses are designed to respond to practical requirements.

Complaint management

Thanks to optimised workflows and processing rhythms, we deal with technical complaints and warranty claims within five working days. In more than a half of all cases an assessment with an expert's report and photographic documentation is completed within two days. The speed of our response sets the standards for the sector!

Technical hotline

We are available at any time in the event of application-related problems. We can be reached via the technical hotline on +49 (0)511 938-5178.

Attendance at trade fairs

Trade fairs and exhibitions are an important platform for hosting meetings with our customers. ContiTech is represented at numerous trade fairs and in-house exhibitions around the world.

ContiTech Antriebssysteme GmbH
Philipsbornstraße 1
D-30165 Hannover
Postfach 445
D-30004 Hannover
Phone +49 511 938-71
Fax +49 511 938-5233

GO FOR **e**XCELLENCE

www.contitech.de
www.contitech.de/aftermarket